

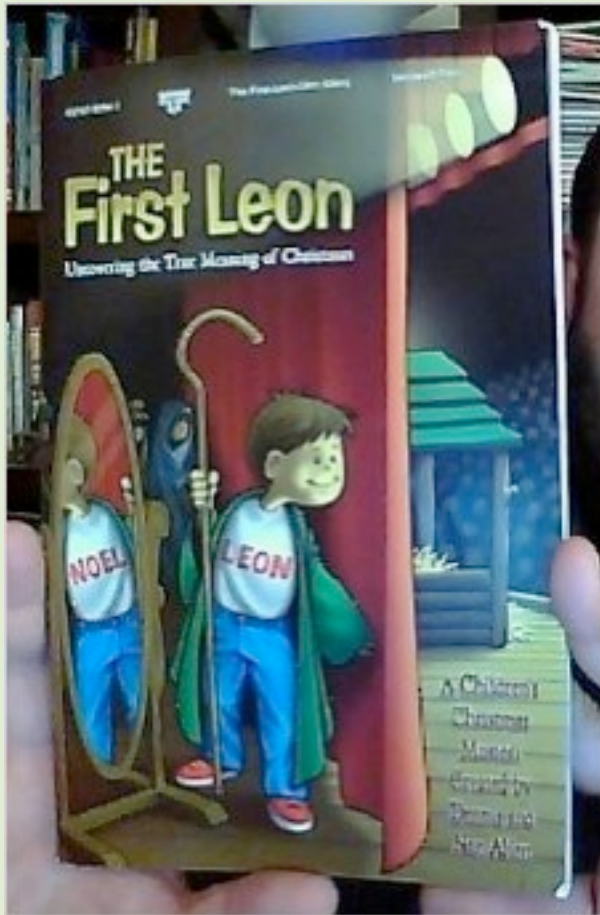
October 29, 2014



GOOD NEWS

FIRST CHRISTIAN CHURCH (*Disciples of Christ*) 432 Ferry St. SW, Albany, OR 541-926-8606

Vol. 58, No. 15 Web site: <http://www.fccalbany.com/>



CHRISTMAS MUSICAL

Under the leadership of Douglass Anne, the children and youth will be presenting a special Christmas musical during worship on **Sunday, Dec. 14**. Please plan to join us as we uncover the true meaning of Christmas with music, dance, and drama! "The First Leon" will offer opportunities for children and youth of all ages and abilities to be involved, both on stage and off.

Participants are asked to return permission forms (which were mailed last week) by Nov. 2. Rehearsals will be during the children's worship time on Sunday mornings, Nov. 2 to Dec. 7. A final rehearsal will be from 10 a.m. to noon on Saturday, Dec. 13, followed by a lunch for all participants and their families!

Adult volunteers will be needed to help with the rehearsals, the simple costumes, the lunch and whatever else comes up in preparing for this musical which is sure to delight us all.



MEMORIAL SERVICE SET FOR NOV. 9

A service to celebrate the life of Elizabeth Rea will be held at 2 p.m. Sunday, Nov. 9 in our sanctuary. Betty was an active member of our congregation for 41 years.

The service will be followed by a finger foods reception in fellowship hall. If you are willing to help provide food, serve at the reception, or clean up, please contact Linda Lees who is coordinating the reception.

TIME CHANGE: Turn back clocks one hour on Saturday night, Nov. 1.

WREATH SALE ON NOV. 30

Get your Christmas wreath and swag and help support the youth mission trip! The sale will begin Sunday, Nov. 30 and will end when they are all gone!

If you would like to donate pinecones, greenery, or bows, please contact Douglass Anne.

Our church has a tradition of sending our high schoolers on a learning and service trip during the week of spring break. For 2015, the group is exploring the possibility of a trip to either Mexico or Yakama Christian Mission in Washington. No matter which location, they will need funds and are starting to raise the money needed with this wreath/swag sale.

Church Family News

In Our Prayers

Don Rea and family
with the death of Betty Rea
Chet Houser
Laverne Bilyeu
Tom Cochran
Linda Bricker
Jan Goby
Nancy Robb's brother
Jack Miner
Lynn Evans
Harryette Anderson
Sarah Mack's step mom
Doreen Hilderbrand
For those in hospice care:
Phyllis Silsbee
Cheryl Hersom
Nadine Wood's mom

Attendance and Giving

Sunday, Oct. 19

Attendance 131
General Fund giving \$4,396
Building Fund giving \$5,860

Sunday, Oct. 26

Attendance 123
General Fund giving \$3,017
Building Fund giving \$275

General Fund giving in Oct. \$22,218
Amount needed monthly \$24,537

Building Fund giving in Oct. \$8,820
Amount needed monthly \$8,925

OUR MISSION

is to be a faithful, growing church that demonstrates true community, deep Christian spirituality, and a passion for justice.

WELCOME TO LES AND DEANNA

A warm welcome to Les and Deanna Peterson who joined our church on Oct. 19. They have been worshipping with us for several weeks. Deanna and Les have been married for 55 years and have two children and four grandchildren.

Les is an alumnus of NCC, Phillips University Seminary and the School of Theology at Claremont. He served as a Disciple pastor for 25 years, a chaplain for 5 years and as a case manager for 13 years.

Deanna attended NCC and is an alumnus of Portland State University. She taught English at Chemeketa Community College and tutored international students.

There's a lot more to their story so be sure to greet them and take time to get to know them.



HELP KEEP US OUT OF DEFICIT!

Every gift to the General Fund supports the full ministry of this congregation. It provides education for children, youth and adults. It supports our worship life and extends beyond our congregation in mission to the community and world. It supplies and maintains the vital resources that are our tools for ministry including our building that is used by the congregation and community on a daily basis as we extend the love of Christ in word and deed.

The General Fund is generously supplied by faithful, regular gifts from the congregation. People have pledged their support and are keeping their pledges. It is also supplied by special love gifts that come throughout the year and are most appreciated as we near the end of the year and hope to see our checkbook clear of deficit. As you consider your giving in the season of giving, an above-and-beyond-the-pledge gift to the General Fund or the Building Fund would make an important difference.

THANKS

- Thanks to all who attended the jazz fundraiser for the choir. More than 100 people attended and \$3,000 was raised.
- We want to thank all of you who helped this past year with prayers, good thoughts, rides, messages and cards. Who could help but get better with an army of believers behind us? Rolland is cancer-free at this time (no guarantee it will last) and my bruises are fading as my pelvis fracture heals. We are looking forward to a few more healthy years.

With love and gratitude,
Laverne Bilyeu

LOOKING AHEAD

Nov. 16

Jackson St. Youth Shelter Reader's Theater fundraiser in our sanctuary at 3 p.m.

Nov. 23

Installation of our new pastor

Nov. 27

Thanksgiving Dinner potluck at 1 p.m.

Nov. 30

Wreath fundraiser by youth 7 p.m. Evensong "Lighting the Way"

Dec. 7

Fourth quarter congregational meeting after worship to vote on budget and nominees

Dec. 14

Musical "The First Leon" by children and youth in worship

Dec. 15

6:30 p.m. Leader Appreciation Dessert

Dec. 21

7 p.m. Choral Vespers

Dec. 24

7 p.m. Christmas Eve service

Feb. 7-8, 2015

Women's Weekend at Silver Falls Conference Center

TRUE COMMUNITY

THANKSGIVING DAY POTLUCK DINNER

Join your church family at our annual Thanksgiving Day potluck dinner set for 1 p.m. Thursday, Nov. 27. Bring your favorite holiday foods to share. This is an easy way to enjoy the holiday without having to clean your house and do all the cooking!

In order to know how many places to set around the tables, we ask folks to sign up on the sheet on the rolling counter near the office.

ADVENT EVENSONG – "LIGHTING THE WAY"

The church family will gather in the sanctuary on the first Sunday evening of Advent to usher in the season with carols, twinkling lights, warm fellowship and delightful treats. The lights of Christmas will be presented with joyful pageantry and the symbols of the season will be introduced once again to help us prepare for the celebration of the birth of Christ. This program is for all ages and will have something memorable for every member of the family. Come and celebrate the season of joy at 7 p.m. Sunday, Nov. 30. Bring a favorite Christmas treat to share at the fellowship time that will follow the service.



INSTALLATION OF DOUGLASS ANNE CARTWRIGHT

What a blessing it is to have our new associate pastor on board. Douglass Anne is already proving to be a wonderful addition to our staff. She is intelligent, creative, deeply faithful, well-prepared, loving and already very much a part of our hearts. She is hard at work preparing a Christmas musical that the children and youth of the church will share with the congregation on Dec. 14.

She has shared considerable time with our youth as they collected food for the Fish Food Drive and is working with the youth and parents to develop a plan for this year's mission trip. She has served at the Community Meal, shared leadership in worship, prepared and preached an excellent sermon and attended all of our regular monthly meetings. All this in just over three weeks! We are blessed indeed!

Douglass Anne will be installed as our Associate Pastor – Minister of Children, Youth, Young Adults and Families on Sunday, Nov. 23 in the 10 a.m. worship service. A reception will be held in her honor following the service. Her parents – both ordained Disciple ministers - will be visiting from Fort Worth, TX and we will have the opportunity to meet them and tell them how happy we are to welcome Douglass Anne onto our church staff and Douglass Anne and Amber into our church family.

DEEP CHRISTIAN SPIRITUALITY

SUNDAYS AT NINE

A new youth and adult education hour is being introduced in November and will continue into the new year. Watch the bulletin, newsletter and church website for the growth opportunities that will be offered at 9 a.m. on Sunday mornings. There will be presentations that share important information about mission and justice work that is being done in our community and world. There will be opportunities for Bible study and faith formation.

There will be experiential sessions where spiritual disciplines are explored and practiced. Seasonal studies will be offered.

Nursery care will be provided and children's programming will be offered as needed.

So keep informed, sign up and get ready to grow on Sundays at Nine.



ADVENT STUDY AT 9 A.M.

"Sundays at Nine" will present a five-week Advent Study beginning Sunday, Nov. 23 and running through Sunday, Dec. 21. This series will be an opportunity to explore the meaning and purpose of Advent. We will look at Advent as a journey in which God seeks us at many levels of our understanding and spiritual willingness. The class will make room for real-life struggles and questions as a part of Advent's spiritual exploration. Participants will have the opportunity to purchase a study book that will provide daily in-home devotions and study in preparation for the Sunday group session.

Sign-ups for this series will begin on Sunday, Nov. 2 and study books will be available for purchase on Nov. 9. Participants with infants, toddlers or elementary aged children should sign up as early as possible so care and programming for children can be arranged.

MINDFULNESS FOR HEALTHY LIVING

Have you ever wondered why you could not stay on that weight-loss program or why your relationships seldom seem to work out the way you envisioned or why you are stressed out much of the time? Perhaps part of the answer lies within you; more specifically, within the busyness of your mind. Mindfulness training is a technique focused on exploring the nature of mind with the aim of opening us to the present moment or "the now".

Please join us for a 3-hour workshop spread over three consecutive Thursdays (November 6, 13, and 20) as we explore the nature of mindfulness, why it is important for healthy living, and how to begin a mindfulness practice. Each of the three 1-hour sessions will begin at 7 p.m. and end at 8



p.m. and will explore a different facet of mindfulness practice (i.e., mindfulness of the breath, mindfulness of the body, and mindfulness of emotions).

Registration for the 3-hour workshop is \$25 with all proceeds donated to Sacred Path Ministry, a non-profit organization in Eugene, whose mission is contributing to spiritual well-being in a holistic health model.

Advance registration is highly recommended because space is limited. To register in advance, contact Terry and Nadine Wood at 541-924-0976 or by email at terrywood4@comcast.net.

— Sponsored by *Albany First Christian Church (Disciples of Christ)*.

PASSION FOR JUSTICE

CAREGIVERS SUPPORT GROUP

A small but caring group of people gather on the first Saturday of each month in the Cornerstone Room at 10 a.m. to support each other in the important, but sometimes challenging work of being caregivers. If you are the primary caregiver for a loved one, you are invited to join this supportive group of people. The group meets to share stories, joys, struggles, successes and failures and offer a safe place to express the wide range of feelings that are a part of being a faithful caregiver. Support and prayer is offered in a confidential and loving atmosphere. For more information, contact Patty Evans.

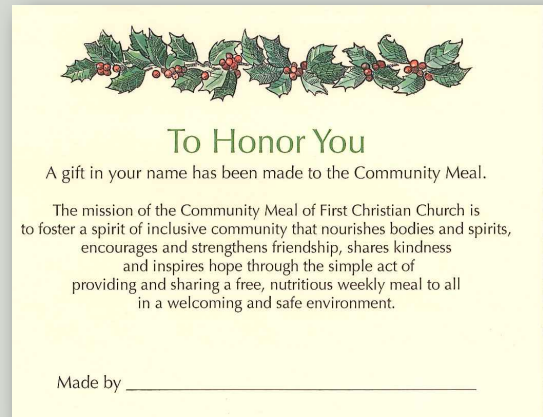
Drop off your unwanted cell phones in the church office and we will donate them to the Center Against Rape and Domestic Violence. It reprograms them to dial 911 and distributes them to CARDV clients.

HARVEST APPEAL FOR PASTORAL COUNSELING

The Pastoral Counseling Center, in covenant with our church, serves as a community resource by offering service to all, based on need for care rather than ability to pay. 80% of PCC clients pay reduced fees. At this time PCC is seeking additional funds through its annual Harvest Appeal.

You can be a part of PCC's work. A gift of \$200 will help a family for a month; \$100 will help a couple for two weeks, \$50 will help an individual for a week.

Checks can be made payable to the Pastoral Counseling Center of the Mid-Willamette Valley, 602 SW Madison Ave. Corvallis, 541-753-9217 or you can make tax-deductible donations online at <http://www.pastoralcounseling-oregon.org>.



GIFTS TO OUR COMMUNITY MEAL

Instead of shopping at the malls this holiday season, you have an opportunity to honor family or friends with a gift to the Community Meal. We have cards that you can send to them noting the gifts made in their honor. Starting Nov. 30 and continuing to Dec. 14, look for the table with volunteers to help you purchase cards.

During the holidays, the Community Meal will be served on its usual schedule.



Above: The trees on Washington St. at the west end of our building have been cut down, the stumps ground out and the sidewalk has been removed. A new sidewalk will be put in.

YOUTH GROUP NEWS

In November, the Chi Rho (Middle School) and CYF (High School) groups are talking about prayer and how prayer fits into our daily lives. We will be exploring questions like:

- How does prayer affect your relationship with God?
- Are there ways of talking with God that you like or don't like?
- How would you re-write the Lord's Prayer in modern language?
- If you could text God or tweet God, what would you say?

UPCOMING EVENTS

SUNDAY, NOV. 16 • 3-6 P.M.

Jackson St. Youth Shelter Fundraiser Readers' Theatre followed by all youth discussion and broom hockey

FRIDAY, NOV. 28 • 9 A.M. - 1 P.M.

Wreath-making at the Albrights / fundraiser for the mission trip
Wear work clothes and layers because it might be chilly!

SUNDAY, NOV. 30 - Plan to sell the wreaths and swags on Sunday morning both before and after worship.

SUNDAY, DEC. 21 • 5-7 P.M.

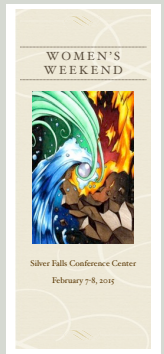
Youth Christmas Party (Details to come. Save the date.)

WOMEN'S WEEKEND

FEB. 7-8, 2015

Women's Weekend is a time to rest, hike, play, reconnect with friends, make new friends and experience Christian community at beautiful Silver Falls Conference Center. The theme of the 2015 retreat will be "The Sacred Landscape." The group will prayerfully, creatively and experientially explore the intersection of the natural elements of air, water, fire and earth with the spiritual landscapes of our souls.

Cost of the retreat is \$90. To reserve your place at the retreat, please complete a registration form in the office and leave a \$25 deposit no later than Monday, Dec. 1. The reservation cannot be confirmed without a deposit.



First Christian team at Fish Food Drive



Albany, OR 97321

432 Ferry St. SW

First Christian Church (Disciples of Christ)



GOOD NEWS